

County Hunter News

September 2018
Volume 14 Issue 9

Welcome to the On-Line County Hunter News, a monthly publication for those interested in ham radio county hunting, with an orientation toward CW operation.

Contributions of articles, stories, letters, and pictures to the editor are welcomed, and may be included in future issues at the editor's discretion.

The County Hunter News will provide you with interesting, thought provoking articles, articles of county hunting history, or about county hunters or events, ham radio or electronics history, general ham radio interest, and provide news of upcoming operating events.

We hope you will enjoy the County Hunter News. Feel free to forward, or provide links. Permission is given for copying or quoting in part or all provided credit is given to the CHNews and to the author of article.

CW County Hunter Nets run on 14.0565, 10.122.5, and 7056.5, with activity occasionally on 3556.5 KHz. Also, there is SSB activity now is on 'friendly net' 7188 KHz. The CW folks are now pioneering 17M operation on 18.0915. (21.0565, 24.9155, and 28.0565 when sunspots better). Look around 18136 or for occasional 17M SSB runs usually after the run on 20M SSB. (21.336 and 28.336)

You can see live spots of county hunter activity at ch.W6RK.com

For information on county hunting, check out the following resources:

The USACA award is sponsored by CQ Magazine. Rules and information are here:

<http://countyhunter.com/cq.htm>

For general information FAQ on County Hunting, check out:

<http://countyhunter.com/whatis.htm>

MARAC sponsors an award program for many other county hunting awards. You can

find information on these awards and the rules at:

<http://marac.org/awards.pdf>

The CW net procedure is written up at:

<http://www.wd3p.net/ch/netproc/netproc.htm>

There is a lot more information at www.countyhunter.com . Please check it out.

Back issues of the County Hunter News are available at www.CHNewsonline.com

Want county lines on your Garmin GPS?

<http://pages.suddenlink.net/w4ydy/hamlinks.html#County>

Download the file to a flash card that fits in your GPS unit, turn it on, and the county lines should appear!

De N4CD, Editor (email: telegraphy@verizon.net)

Notes from the Editor

N4CD Rumblings

1) Wow – lots of mobile activity this month from VT to CA, MT, NY boroughs, to the middle of the country. We ended the month with the KS QSO party with all counties on the air. There were several other Qps during the month too – OH and MDC.

2) Next month – loads of QP's including CO, TX and a bunch more!

3) Radio Conditions – not so hot most days. The SFI is sitting at 67 many days resulting in 20m getting flakey, opening late. The upper bands are mostly shut but there are surprise openings to look for. At SFI-70, you can often make some Qs on 17m. We continue to bounce along the bottom of the sunspot cycle and likely will for another year or 18 months.

4) The convention is coming up in October. Hope you've signed up. Form at the end of the newsletter and the room rate is good to Sept 3 or later if you are interested in coming to Kansas City for the 50th (and many last?) convention. I'm not sure anyone has signed up to host the next one yet. Stay tuned.

On the Road with N4CD I

Once again, the road didn't go to far – just 25 miles over to Garland TX for a summer auction by Jim Sargent of two estates – several hundred items, most of them 'collectible broadcast band' radios from the 1920s to 1970s with two dozen ham items in the mix, plus the usual things like test equipment from Bird wattmeters to VTVMs, tube testers, scopes, signal generators, signal tracers, etc.

In the mix of things – a few nice 'boatanchors' from the past that maybe some of you had at one time. Here's an idea of what was for sale and the price it sold for:

Knight Kit Tube tester	\$44
Harvey Wells TBS-50D with PS	\$155
Hallicrafters HT-40 Transmitter	\$40
Military BC-348 Receiver	\$25
MFJ Versa Tuner 3KW	\$122
Multi-Elmac AF67 TX	\$15
Heath SB614 Station Monitor	\$35
Heath SB-230 KW Amp	\$230
Heath SB634 Station Console	\$15
Heath SB644 Remote VFO	\$10
SB-303 Receiver	\$30
SB-101 Transceiver with HP23	\$88
Dentron Clipperton L KW AMP	\$230

Ten Tec Omni C Transceiver	\$77
Yaesu FT-101ZD	\$60
Hallicrafters HT-32 SSB Transmitter	\$70
Ten tec Omni D Transceiver	\$90
Kenwood TS-511 with PS/VFO and original boxes	\$230
Collins 75S3 Receiver	\$440
Johnson 122 VFO	\$33
Kenwood TS-430 Transceiver	\$55

Local bidders had a 5% buyer premium plus 8.25% TX sales tax, internet buyers had a 10% buyer premium, no sales tax if out of state.

It was interesting to see how low much of the Heathkit stuff sold for – and Ten Tec. Not a whole lot! Most of the equipment was in excellent shape – with manuals and likely was in good working conditions. Most of it was 'on the radio bench' and hooked up to antennas of the SK.

A few things sold for really big bucks – one a Radio Lamp Corporation radio/light – it has a fancy light up top and a tube radio built into the base. Would you believe \$600? Yep. About 3 feet tall.



This was the 500 Executive Model. Had a typical 5 tube receiver in the base that took an external 'long wire' antenna as the radio was shielded by the base.

The other thing was a Atwater Kent Model 10B Breadboard Radio – the larger model. Sold for \$770.

Here's a Blickersdorf Model V typewriter – sold for \$350. Pre-QWERTY keyboard layout – designed in the 1890s and sold up to WW1 - and fairly 'rare' despite hundreds of thousands being made.

The first widely successful production model was the Blickensderfer 5, introduced at the 1893 World's Columbian Exposition in Chicago .The 5 was the first portable, full keyboard, typewriter and came with the DHIATENSOR keyboard as standard. The Blick 5 was the simplest of all Blickensderfer models and more were produced than any other Blickensderfer machine. About 74,000 or 37% of the 200,000 typewriters produced were Model 5s.

Blickensderfer's typewriter became the world's best seller, and the company became one of the world's largest typewriter manufacturers. The factory employed about 200 people and produced about 10,000 typewriters per year at its peak (1903-1907) until the factory closed in 1919. The first No. 5, which sold for \$35, compared to the benchmark machines of the day which cost \$100 or more. Each new model 5 came in a simple wooden carrying case with an extra typewheel, a dozen ink rolls and a tool kit.



George Blickensderfer's invention dramatically reduced the complexity of the typewriter design. A typical Blick contained only 250 parts, compared to the 2,500 parts of a standard typewriter. It was much smaller, lighter and cheaper than others.

Instead of the common mechanism with letters on the end of individual type bars connected to the keys, the first Blickensderfer used a cylindrical typewheel with three rows of characters; lower case, upper case, italics. Depressing a key caused the typewheel to turn so the correct letter was positioned over the paper. As the wheel turned it moved downward, contacting an ink roller prior to striking the paper. This allowed for greater speed in typing as there were no keys to become jammed or stuck together. The interchangeable typewheel principle is very similar to the IBM Selectric design introduced almost 70 years later in 1961. Like the Selectric, one could easily change the typeface or the font style on a Blickensderfer simply by changing the typewheel.

Blickensderfers were also notable for their unique keyboard layout developed by George Blickensderfer after careful analysis of the English language. The home, or lowest row of keys, contained the most commonly used letters. Blickensderfer determined that 70% of the most commonly used letters and 85% of words contained the letters DHIATENSOR. This positioning allowed the typist to keep his hands on the home row as much as possible, minimizing extraneous hand movement and increasing efficiency.

The QWERTY keyboard introduced on the Sholes & Glidden typewriter in 1874 was designed for purely mechanical reasons and the chances of the keys striking each other and jamming was more limited with this configuration. Because the Blickensderfer used the typewheel, the "scientific" keyboard layout could be used for maximum typing efficiency.

In the end, QWERTY won out – that's what's on your computer despite keys never jamming on a computer keyboard.

- - - -

First up at the auction was an hour of 'misc' sales – boxes of what not, connectors, 'projects' and loose ends. 75 trays of parts and pieces. Likely some day when someone is cleaning out your basement/garage, the stuff that isn't all together, or is homebuilt misc projects gets thrown in boxes and gets sold for anywhere near a buck to 25 bucks depending what is in it. Some find useful stuff in there from soldering irons to parts cabinets full of parts. I bought one box that had a homebrew regen receiver breadboard on a metal panel. Barely worth the 2 bucks I paid for it, but it will yield some good parts, then hit my trash container along with the rest of the contents of the box.

The auction started at 9am with the internet bidders on line. If you bought on line, you'd wind up paying shipping charges as well to your QTH. A fair number of items were sold to internet bidders.

I did spend a few bucks on a 1929 Pilot Wasp in a nice cabinet – one of the first short wave regen 'kits' offered for sale. Not that many Wasps were sold as the company quickly came out with a much better performing 4 tube version and that become very popular. Had to pay a few bucks to buy it, though. Well, a lotta bucks. Bought two other things then headed on home late in the afternoon.

Maryland/DC QSO Party

The WAE contest was going on on cw – and took many operators away from the QP to work the Europeans. The WAE caused lots of QRM to those trying to do the MDC QP,

too.

K3AU (operator K2WYE) in ANA MD 2 cw 106 ssb

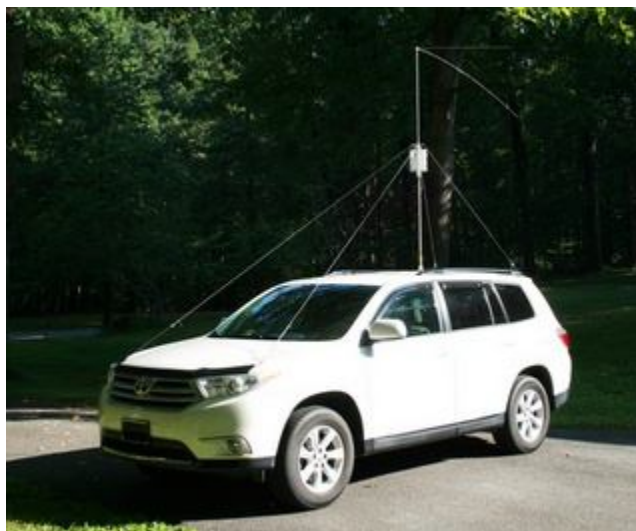
My grandson did much of the operating as a guest Op with me in his first contest. We had lots of fun in the short time we had to operate.

W4GO mobile 490 ssb qso

I operated from 12 multipliers in MD-DC, plus two other states.

Out of 490 QSOs, 285 unique call signs were worked. 45 stations worked me three or more times. My top chasers were WN4AFP (16 Qs), KA4FVE (11), WB8WKQ (10), WB9HFK, AA5UZ, K3TW, and AI4DB (7 Qs each).

Stations in MD-DC accounted for 10% of contacts. Twelve of the 25 MD-DC multipliers were worked.



Participation overall seemed stronger than last year's edition, although it's hard to compare with the format change from two days to one.

I added an APRS position beacon to my mobile setup for this contest. The APRS comment field was used to indicate current HF band. A few people commented that the position and band reporting were helpful.

Thanks for riding along.

WN4AFP – fixed SC - 8 cw 53 ssb

The new and improved MDCQP was on the air! Made more contacts this year than my 3 previous years thanks to the mobile ops. The mobiles made this one interesting. Contacts included W4GO/m 16, K0BAK 3 and N3ADF 2. I ran along with Matt W4GO for hours on 40m and 80m. He had an amazing mobile signal. I did find W3VPR near the end on 40m. 20m didn't work well for me, so I had to rely on 40m and an extremely noisy 80m. This a 'phone' contest...how do we increase CW activity? The change from two-day to a one-day contest was a good one. Thanks to all the MDC ops who pulled my 80w IC-751 with wires signal out of the noise. Congrats to the MDCQP team!

73s Dave WN4AFP

KN4Y fixed in FL - 7 cw

Worked a few on CW made extra tough with the WAE CW DX contest blasting away. Mediocre band conditions did not help.

- - - - -

K0BAK mobile – his report

K0BAK 8/11 WashDC and Maryland rove report

Last year at this time, I attempted to operate mobile in the Maryland DC QSO Party (MDC QP) while activating MD parks. It was an awful outing, starting with turning around more than halfway to the first park to get a forgotten antenna part, and ending with an antenna tuning problem at the first park that killed the 2-day contest for me after only 30 minutes on-air. I carried the memory of that failure with me this year, determined to bury that experience with a good outing this time.

This year the MDC QP contest was a 12-hour event from noon to midnight. I figured that would be enough time to activate a ATNO park in WashDC, and continue to activate new-to-me parks in different MD counties as I made my way back toward home along the I-95 corridor. As a bonus, I planned to meet my daughter and SIL before the contest for breakfast in the MD suburbs of northeast DC where she now lives and works. I continue to use my “new” TV van with a temporary radio setup, and the same screwdriver antenna with 17’ mast and 400w amp I’ve used for several years.



On contest day Saturday I woke up ridiculously early, probably anxious and excited about the rove. I looked for something in DC I might be able to activate before meeting my daughter, in order to check off another park in my long-term quest to activate everything in DC. The only locations that seemed to work with my start and meet time were the “historic trails” that are coincident on US route 1 just inside the eastern DC border: K4581 & K4582; the first “trail” was only activated once in DC and the second never was.

(Note that each state’s section of trails counts separately, so it was important that I activate these trails within DC.) [Note de N4CD – these are POTA only parks ad not in the WWFF system.]

I posted the last-minute plan here, and got on the road a little after 5AM. Arriving on US1 in DC only a bit late, I was lucky to find on-street parking in front of a 7-11 store. Since there were power cables overhead, I used my short whip to avoid electrocution. The RF and traffic noise was as awful as expected, and at some point I mistakenly entered a hotkey into my SDR software that made RX even worse. Despite all those challenges, 13 strong stations managed to get through. Each contact had to be done a second time in order to log a complete contact for both parks (there are no “two-fers” in POTA unlike NPOTA).

I left just in time to meet my daughter at 10AM, had a very nice visit, and then continued to my originally-planned first stop in northeast DC for the start of the contest at noon. K4547, “President Lincoln and Soldiers Home”, had not been activated before. On a map street view, I saw there was a gated guard shack, so I had purchased a timed ticket for a tour of the Lincoln Home that I did not plan to use, in order to get through the gate. The guard took down my license plate and driver’s license info and let me through. He did not ask to see my ticket after I said I was there for the tour, so future activators may not have to bother to get the ticket unless they’re as cautious as I am.

I was worried about not having space in the parking lot because earlier tour slots were sold out, and worried about LEO challenging my operation once the mast was up and my doors all open. Neither worry was realized. There was significant RF noise, but not nearly as bad as the earlier US1 stop. For an urban location, it was fairly open and above local terrain, so altogether it was a relatively good place to operate in the city. After setup I had a few minutes before the contest start, so I looked for other POTA activators, finding W1NVT and N4CD for P2P contacts. When the contest started, I could only spot myself as a MDC QP mobile, not a POTA participant. Despite this, I was happy and grateful that quite a few POTA chasers got hold of me.

After the challenges of the DC activations, I was happy to head to the relative isolation of the visitors’ center of Patuxent NWR (K0334). I was able to park in a shady spot, which was welcomed as it was a hot day and in the previous park a literal puddle of sweat formed on my operating table under my forearm. I was lucky that my phone was able to squeeze out one bar of cell coverage, since spotting is important for attracting responses to CQs in a short operating time. At the end of the operation, I was able to answer 3 other activators for POTA P2P contacts. I packed up and drove to the northern part of this large NWR to operate from a new MD county. That parking location was much more open and I made more contacts there especially on 20m, along with one P2P at the start before I started calling CQ again in the MDC QP.

My next stop was not a park. Since the I-695 route to my next park took me over a strip of Baltimore City which is a rare “county” in MDC QP, I planned to operate there briefly hoping to catch those needing the /BAL multiplier. I operated only a couple hundred yards from the highway next to a waste disposal area. Not the most bucolic or aromatic setting, but the time cost for making the contacts there was low. After completing my relatively short stay, I got back on the highway for the bridge crossing over Baltimore Harbor.

While K1586 North Point SP was near my route, it looked like there was an entrance fee and involved a slow drive to a parking area, so I skipped that park in favor of the much smaller K4365 North Point Battlefield SP, which is in the same Baltimore County (different from the City). I found a newish empty parking lot, where I was able to park with my tail to the sun. At this time of day, the dinnertime doldrums common to small contests had set in so I didn’t get many contacts per minute. It didn’t help that a large thunderhead was visible and creating very large static crashes. Park chasers filled in the gap from the lack of testers, including a French station -- thanks. There are no facilities at this park, there was a family on benches in the park, and no nearby convenience stores or fast food places, so I utilized new technology for old men – PM me for details. :-)

The next county on my route home was Harford, which has several SPs. It looked like the quickest and easiest was K1601 Susquehanna SP. A somewhat open parking lot at a high spot in this heavily-wooded park looked like the obvious operating location. I got there driving by a scowling ranger who probably expected to be able to close up early since there were no other visitors in the lot and weather was getting bad quickly. After I set up I heard one MDC QP caller from the same county, but he couldn’t pick me up, though I don’t think he made much of an effort. Threatening clouds rolled in with increasingly periodic flashes, so I reluctantly removed the mast and quit the effort at that park without getting even one contact. Although that was disappointing, the WX for this rove was predicated to be much worse, so altogether I was grateful the WX allowed me to operate freely in the first half of the contest.

One more non-park stop was planned to operate in Cecil County, the last county in MD on my way home. I stopped at the last MD travel plaza on I95. Super dark clouds covered the plaza and a downpour started minutes after my arrival, so I didn’t even attempt to operate here. Even with not operating during the second half of the contest, I had a score well into 5 digits for the first time. Of course the best part was giving quite a few familiar and new park chasers some POTA contacts including a couple first-time activations, and getting 5 new parks for my own activation list.

Mild disappointments:

- Maryland natives Kerri KB3WAV and Jason W3AAX both said they'd try to meet me in a park. I didn't see either, and didn't even get them in my log. :-)
- I looked for fellow Delaware Valley frenetic park rover Joe N2CX on air, but couldn't make contact the couple times I saw his spots while I was operating. OTOH, I got the king-of-all-activators Bob N4CD a few times for P2P Qs ... thanks Bob!
- A Tesla pulled up next to me while I was operating at Patuxent. Worst RF noise ever, including compared to POS trucks which are normally the worst offenders. Come on Elon, you can do better, us hams are natural fans of your cars.

== Summary Stats ==

348 miles driven

15 hours on the road

\$110 estimated gas, tolls, and tour ticket

5 POTA parks activated (6 planned)

5 MDC counties and cities activated (7 planned)

185 total rove contacts

158 MDC QP contacts

12,207 MDC QP claimed score

168 POTA contacts

28 states, 2 provinces, 1 DX country (France x2)

7 P2P: N4CD (3x!), W1NVT, K5DAK, K4CAE, K0USA

== Top Stations ==

Thanks to all those who contacted me or attempted to, especially these top chasers:

- W8ZST, winner with 6 contacts. Thanks so much Mike, including the club contacts!
- W2RAN, close runner-up with 5 Qs, nice job from NH Randall.
 - KO4SB, thanks for your 4 Qs Chuck. Always enjoy hearing your pileup-busting voice.

Book Review of the Month

At the Dayton Hamvention, I picked up a book published by the Radio Society of Great Britain – titled **The Birth of British Radar** - by Arnold 'Skip' Wilkins.

The story (the memoirs) is told by one of the key folks who helped design the Home Chain system – along with other famous people including Wattson-Watts, Rowe, Tizard, and Dowding.

During the 1930s, Hitler was doing a lot of saber rattling, and many in the west expected that sooner or later war would break out. Despite 'appeasement' by some British leaders – giving in to Hitler as he took over Austria and Czechoslovakia - the future looked bleak and England, in the middle of the Great Depression, was in no shape to take on the Germans.

Around 1934, some folks started to ask would it be possible to 'radio direction find' incoming airplanes and how could it be done. Wilkins and others started to investigate what would need to be done to 'detect' airplanes. They looked at typical British bombers – to find out how they reflect HF signals – and it turned out the wingspan seemed to be near a dipole antenna width at 13 MHz. Thus early attempts to reflect signals off an airplane were done at this frequency. It had been noted that receivers near airports sometimes were 'interfered with' by flying aircraft – although this was kept out of the news reports of the day.

One of the problems was generating a lot of power – in short pulses – to reflect off airplanes. The technology wasn't there yet. Things such as high power pulse tubes had to be invented - with super cathodes capable of high emissions. Initial experiments were conducted with 25 KW and 50 microsecond pulses – but the real goal was 100 KW peak pulse power and 10 microsecond pulses.

They had to invent and develop a decent 'pulse receiver' with appropriate bandwidth in the IF, yet sufficient gain to detect the weak return echos. The range is governed by the 4th root of the power. (square law times 2 for both directions).

Initial antenna experiments showed that horizontal polarization proved to be best and by using ground reflection – they could not only determine bearing but also determine altitude – using switching between antennas. To determine direction, they used a phasing system of two sets of dipoles – adjusting with hand controlled phasing units to determine peak direction.

As war approached, it became even more critical to get things going, and sites set up along the coast facing Europe. Most of the installations consisted of 256 foot high wood towers with arrays of dipoles, fed by a combination of open wire and coax lines. (Oh, they had to invent and produce high power coax lines too – to minimize signal pickup in the long runs up the tower).

If you're a history buff, you'll recall that radar played a critical part of the Battle of Britain – the air war that was won by just a hair by the British. Being able to detect early the grouping of bombers before they crossed the English channel, being able to determine roughly how many planes and what direction they were headed, allowed the British to deploy their meager resources directly at the threat. There was no wasted time 'looking for Germans'. When the fighters took off, they knew when and where the Germans would be – what heading, what altitude.

Fortunately, the Germans believed that radar was useless against bombers and never went after the towers and installations – a horribly big mistake on their part.

By the time war broke out, the systems were deployed mostly on 22-24 MHz (13 MHz suffered major interference problems), and as far up as 60 MHz shortly thereafter. They ran near 100 KW and 15 microsecond low repetition rate pulses – and could 'see out' 75 miles most of the time.

One of the interesting things you learn is that the first IFF system (Identify Friend of Foe) – very useful for telling in an incoming flight is your bombers or the enemy's bombers – was first done – by putting a resonant dipole on the planes or using a tail – tapped at the right points – as a reflector of the radar signal. With a properly spaced feedline, and a mechanical device to make and break the connection, you could increase your reflection at a known rate – and therefore differentiate your 'echos' vs those from enemy planes. The signal would get brighter on the CRT display. A few years later, they went to 'active' systems up in the 130 MHz range

It was a decent read – quite detailed on the monthly progress and the problems they faced getting to a working system. As history shows, it worked fairly well and was critical in winning the Battle of Britain

Not to forget the rest of the 'radar' history, there were epic struggles as well to get 'millimeter' systems working. These used just invented cavity magnetrons to generate high power and microwave frequencies – the main use at first to detect submarines as night – and later to even spot submarine snorkels/periscopes. Other systems were used for night fighters. (Germany deployed several radar systems later in the war). US Ships and subs eventually got radar to help find the enemy – late in the game.

KB0BA/N0XYL Trip Report

“What a wonderful trip to North Dakota. We traveled a little over 3500 miles in 8 days, covered 86 counties, and finished running North Dakota (our 28th state) as well. Hopefully we made a few people happy! Thanks to all who made a contact with us! Lowell had two keyers with us, but the first one ran out of battery. First he lost one of the screws after replacing the battery, but then the cover popped off somewhere in the car. He grabbed the second keyer and that would only work on one side. W4SIG needed the county on code. Lowell did the next best thing by touching wires together to send a signal report. Pretty tricky but it worked and Kerry got his county! We're hope now for a few weeks unless we do a day trip or two before September. We will be going to Ripley Co., IN in September and may sneak up to Pennsylvania for a few southern counties I need. “

NF0N Trip Report

We are home from my 4 day family reunion trip. I was hoping to get self-credit for a couple of counties and did get those along with helping with a few needs for others. I had a great time, hope I got a lot of counties for others and it gave me a good test of my mobile antenna system. All worked great. I am using the ICOM-7100, 100 watt's and Tarheel 200a-HP, CH-1 Capacitance Hat, 6-foot whip and the Tune Matic Tuner. One suggestion to other mobiles. I use the N8XJK Battery Booster, it keeps the battery voltage at 14 volts all the time, even with the engine off. You can turn the engine off and the radio still puts out full power. For me, it's well worth the price. Another item to have, is the county line file in your GPS. Every mobile should have this loaded. Again, thanks for the many who called while I was mobile and we will have to do it again!

Mike, NF0N

On the Road with N4CD II

The large annual summer trek to the Antique Wireless Conventions in Addison IL and Henrietta NY was underway – this year in reverse order. I'd head to NY state via a bunch of parks in TN, VA, WV, and head on up through PA to NY. After the convention there in Monroe County, I'd head over to Warren NY to visit the sister and the new expanded house on Lake George. After a few days, I'd head back west to Addison IL in Dupage County for a few days, then zip back to TX on a more than 4400 mile trip. The 2016 Malibu is now up over 80,000 miles.

Wednesday 8 8 18

So.....bright and early on August 8, 2018 at 6:02 am I was on the road headed east along I-30 to I-40. NU0Q was out in IA and AB7RW was in UT – but it would be a few hours until the bands opened for me to catch them. Not much going on at 6am. Sure enough, the T/C ratio, that's the truck/car ratio, was about 1 to 4 headed east on I-30 and later I-40 across AR and into TN. For every 4 cars, there was one big rig sharing the road. Traffic moved well all day. N9JF showed up in Union KY.

There was time in the afternoon to hit one park in TN – **Hatchie** – KFF-0535 in Haywood County TN at 1900z. Still Central Time so that was 2pm. My planning would be to try and one only one park in a county even though there may be several. To 'activate' the park and get the credit for that, I need 44 contacts, and some county hunters snooze if the mobile is later in the same county but a different park. Others will help out with more contacts. Grid EM55.

From the web:

“Hatchie National Wildlife Refuge is an area of swampy bottomland consisting of a portion of the floodplain of the Hatchie River in West Tennessee, covering 11,556 acres in southern Haywood County and central Hardeman County. “

The interstate goes through it, but that doesn't count, but the Refuge Office is only a few miles off the interstate so I headed there. This was a Wednesday – and it was 1900z – time for the 1900z hour long edition of higher speed cw and contacts. Played around in the CWT for 50 contacts, then off to the CH frequencies. Success with 86Q. CWT

runs at 1300 and 1900 during the day on every Wednesday for an hour each time. I set my keyer at 29 wpm and many are doing a bit faster. CWT helps put contacts in your log fast to reach the 44 goal easily.

Time for one more today - - and that is the South Fork Waterfowl Refuge Area – KFF-3961 in Madison County, TN. It's just a few miles off the interstate to the HQ and in the same grid EM55 for the grid chasers.



From the web:

“The site is comprised primarily of early successional forest. This 778 acre property was purchased as wetland mitigation, thus no management can be done on most of the refuge. This has resulted in a densely stocked forest.”

Not much to see. Got my QSOs, caught an Australian park with VK4FW/P in VKFF-1669 on 20cw, (Vernon Conservation Park), and headed on into the Super 8 motel in Jackson, TN for the night. Dinner at the Old County Buffet. \$10 – OK. Got a good start on miles on the trip today.

Thursday 8 9 2018

Now it was rain and 74 degrees F. 97% humidity. There would be a lot of rain on the trip – days and days of it. Endless days of it. Well, you take what you get. It's been near 100F in the Dallas area all July and I stuck pretty close to home for most of the month.

First up – Natchez Trace State Park KFF-2961 in Henderson County TN. Early in the morning but squeaked by with 47, including working VK4FW/P on both 30 and 40M down under in a different park there! 1215Z – 7:30am - few county hunters around at the start. A few more showed up – just enough!

From the web:

Under President Franklin D. Roosevelt's New Deal Program approximately 48,000 acres of land were purchased in the area of the park. This purchase provided jobs for many people. Programs such as the Civilian Conservation Corps and Works Progress Administration established many of the buildings still being used today and laid the foundation for what is now Natchez Trace State Park at the core of the large tract of public lands.

The park's hiking trails, range from a one-half mile up to 4.5 miles, and a 40 mile overnight trail. The trails wind through the forest and fields and along the lakeshores and streams of Natchez Park. Visitors also enjoy the museum that features local and park history, picnic facilities, camping, cabins and lodges, boating and the park's restaurant.

Natchez Trace State Park is one of the few parks that have an onsite wrangler camp. Located 2.2 miles south of I-40 on Hwy. 114 the Bucksport Wrangler Camp features 65 campsites with full hook-ups, two bathhouses and a dump station. There are 250 miles of riding trails on the south end of the park in the Natchez Trace State Forest operated by the Tennessee Department of Agriculture.

Natchez Trace State Park is located on an alternate route of the old Natchez Trace. This route of the old trace is on the opposite side of the Tennessee River from the Natchez Trace Parkway. The name originally applied to a series of trails and paths that originated with animal migration routes and American Indian trade and travel routes. These were later used by returning boatmen that had floated goods to markets in Natchez and New Orleans from the Nashville area.:

Two years ago, the Natchez Trace was an entity in the NPOTA – National Parks on the Air. You could run it anywhere along it's length. No so today.

Not far away, just 3 miles, you can run Natchez Trace State Forest and Wildlife Management Area – KFF- 3957 which spreads over a few counties. I ran in the part in Carroll, TN. Heard Bob KK5NA back on the air after a long absence. Also worked IK0MHR for the 3 park in a day and a half. Caught VK4FW/P on 30m again for a

'park to park' contact. Yeah. There's a short window to 'down under' each morning and evening.

Next Up – Montgomery Bell State Park in Dickson County. From the web:

“Montgomery Bell State Park is located seven miles east of Dickson in Dickson County. The park was once the center of iron industry in Middle Tennessee. The park’s namesake, Montgomery Bell, formed one of the largest iron industries in Tennessee. Iron was once thought to be more valuable than gold and was a very lucrative industry at the time.

Montgomery Bell State Park is equipped with a conference center that can host up to 500 people. The onsite restaurant is open every day and available to cater events. Within the center, the inn offers 120 rooms and five suites. “ Camping and trailer spots too

Puled in at 1535Z and got to work giving out contacts. Caught Bob, KA9JAC, in a park up his way in WI. He's been running them up there. Reached 50Q so I was happy. Headed to the next.

Harpeth River State Park is next – KFF 2949 in the system in Cheatham County TN. You can run this at half a dozen places. Found a convenient spot – and got my 45+Qs. A index today 5, K=2, SFI=69. so not too bad. Even 10 QSOs on 17m in the log. Caught Bob KA9JAC in another park in WI.

From the web:

“The Harpeth River State Park is a linear park that manages nine river access sites along 40 river miles. Sites include several natural, archaeological and historic areas. The park is popular for kayaking, canoeing, fishing and hiking. Canoe access areas are located at all sites (excluding archeological areas).

The Harpeth River is a Class I river. It is appropriate for beginners to advanced paddlers. Visitors can bring their own canoe or kayak. Rentals and trip information are available from local outfitters in and around Kingston Springs. “

Well, still time for more today – I'm trekking east but only a county at a time – there's a park in each county along the way to run!

Next up – Long Hunter State Park – KFF-2956 in Davidson County TN. Pulled in at

1908z (2pm local) and got to work. Started on 17m and worked 9 there. Then I worked my way down the bands – 20 CW AND SSB, ,30,40M. A few DX stations were in the log including EA1DR and IK0MHR, IW2BNA, and a PE1OAD/MM.

from the web:

The 2,600 acres which make up this area became a state park in 1974 and has four sections, Couchville, Baker's Grove, Bryant Grove and Sellars Farm. Long Hunter State Park offers a variety of recreational activities including fishing and hiking and has two boat launch ramps on J. Percy Priest Lake, a group camp, a back country campsite, meeting facility and a visitor center. The more than 20 miles of hiking trails provide a variety of terrain and habitats and range from pleasant strolls to longer jaunts for the more adventurous. Trails include a self-guided, paved arboretum trail and the five and a half -mile Volunteer Trail that follows the lake shore.”

I can keep going – going to be a long day with many parks!

Next up – **Cedars of Lebanon State Park** KFF-2935 in Wilson County. Pulled in at 2030z – that's 3pm local time and got to work. Hit 17m for 8 QSOs then down the bands including 10 on 20M SSB. Whipped off enough in a short time – success. Getting late in the day.

From the web:

“Cedars of Lebanon State Park is located in Wilson County and is part of the Cedars of Lebanon State Forest. The park is named for Eastern Red Cedar trees found throughout the area. The trees reminded early American settlers of the famed Biblical cedar forests that thrived across Mount Lebanon in what is now the Mediterranean area. Cedars of Lebanon became a state park in 1955.

The 1,139-acre park has 117 campsites equipped with picnic tables and grills, electric and water hookups. There are an additional 30 tent and pop-up campsites available. A modern group lodge, open year-round for organized groups, has a total sleeping capacity of 80 people.”

Can I get in one more? Right across the highway is Cedars of Lebanon State Forest – KFF-3924. It's late in the day

Find a spot to run and start out. Contacts are coming slowly. I'm surrounded by heavy forest. Catch an SV1, a few EU's but not many US. Not much later a deluge starts.

Hmmm.....this isn't going to work. The bands are pretty much gone for the day. No way to get to 44Q. I've got 30 in the log. The antennas are getting detuned with the heavy rain and the car not moving – raindrops sitting on the resonators – the rain continues – then commences a real downpour where you can barely see the front end of the car - it's dark outside – when the rain lets up a bit - it is time to head to the motel not far away in Lebanon TN- to the Ramada Inn – and dinner at nearby Shoney's. Rained all night Yuck weather. I'm 757 miles from home now. Seven parks in one day is probably too many – there isn't enough time with good propagation available with current sunspot cycle conditions.

Friday 8 10 18

The day starts out with a trip to **Edgar Evins State Park** KFF-2944 in Dekalb County TN. The bands are pretty good at 1220z – 7 am in the morning – and still on CDST here. Kraig, KA2LHO is setting up in a FL park and work him during the run. K8ZZ is in Hampshire MA and catch him for two QSOs. NU0Q is up in SD and he's in the log too. Busy summer travel season for many mobiles which keeps county hunters listening on the bands! Good. Success here with over 100Q. 17M was working, but 40m very flat – no much going on.

From the web:

“Edgar Evins State Park is located on the shores of Center Hill Lake in the steep, hilly Eastern Highland Rim. The 6,000 acre park provides many recreational opportunities, cabins and campsites on one of the most beautiful reservoirs in Tennessee. The park also has a large on-site marina with restaurant and gift shop.”



I don't have the time to enjoy and 'recreate' but it's a nice park if you live in this neck of the woods in TN. For most, if not all, of the TN parks, there is no admission charge which is great when you're hitting many parks a day!

I head north a bit to **Cummins Falls State Park** in Jackson TN – KFF 2940 in the system. Every eligible park is given a designator by the WWFF folks – and in the US, they start with K. You can find a handy dandy reference of parks to counties (usually but not always 100% correct) at <http://countyhunter.com/Toplist/KFF-County.htm> so if you don't get the county, or work someone else who isn't spotted on W6RK, you can figure out with high probability what county the run was in.

from the web:

“Cummins Falls State Park is an idyllic, but rugged, 282-acre day-use park located nine miles north of Cookeville on the Blackburn Fork State Scenic River on the Eastern Highland Rim. Located in the Cordell Hull Watershed, the area has been a scenic spot and swimming hole for local residents of Jackson and Putnam counties for more than 100 years. Cummins Falls is Tennessee’s eighth largest waterfall in volume of water and is 75 feet high.”

Well, now it's to **Burgess Falls SP** KFF-2934 – the falls (and river) are actually between White and Putnam TN as a wet line but the park is in White TN.

From the web:

“Burgess Falls State Park, located on the Falling Water River, is a day use park, noted for its natural beauty and four waterfalls that cascade down from over 250 feet in elevation. The last of these falls is the most spectacular, plunging more than 130 feet into the gorge. The area was originally populated by Native Americans of the Cherokee, Creek and Chickasaw tribes. These tribes used the land as a hunting ground until the late 19th century when a gristmill and sawmill began operating on the river. The Falling Water River was used to generate hydroelectric power for the city of Cookeville from 1928-1944. In 1973, the territory became a designated Tennessee State Natural Area, protecting the diverse forest and aquatic habitats.”

Success here with over 44Q. I work VE2GT in a Canadian Park along with KW4MG/VE3. 7Q on 17m cw here. Jim, N9JF is mobile in Franklin IL and Ed, K8ZZ is running around New England now in New Haven CT.

About here we have the big 'collision' of mobile paths. It seems that Peter, N4UP, had

planned and posted a trip to cover CT and MA counties. Meanwhile, Ed, K8ZZ, was helping moving a friend to Long Island NY from Kansas City. You didn't hear him head east because he was driving a U-haul filled to the brim – and with his mobile on a trailer behind the U-haul. Next time you heard him, he was in 'W2' land. He's been working on getting to all 3077 US counties to have 'run them all'. He ran the boroughs of NYC (not fun with all the traffic and lack of spots to stop and run without 20 over S9 noise), and needed to run CT and MA and RI. He had only a few days left before he had to head back to KS. Well, darn, as it turned out, he didn't check posted trips, and was zipping around CT and RI just before N4UP's planned trip. That didn't sit well with Peter – who decided to cancel his pre-paid trip, forfeit the funds, and disappear from county hunting. I'm sure he would have had loads of contacts as he was one of the few 'no star' mobiles running around, and had the 1x2 N call and would have been good for Natural Bingo in a couple of the counties as well.

Collisions happen. I remember one year with the national convention out in ID. Turned out to be a messed up situation for me as N2TPH, Miss Ida, passed away 2 weeks before and I wasn't even sure that I could make it now. We had planned on going. I decided to go at the last minute and zipped out there in 3 days – lots of fast driving. Made it to MT the second day – 900+ miles the first day, more the second day. After the convention – I had to get to upstate NY to take care of estate affairs – and there is only one route across MT to get to NY fast. Seems I made a few motel reservations (not many motels in MT – just the big cities and there aren't too many of them. You head east on Route 2. That's about the only choice. Seems that Carol, KI0JD, had carefully planned a trip going east after the convention and posted it. Along Route 2. (not that there are many choices – there aren't). She had all here counties planned and had lists of 'last counties' for the folks. I'm an early bird – leave early. She leaves later. Needless to say, I hit all the counties along the way just before she did. We even wound up staying at the same Super 8 motels for the next two days trekking east. I did some CW and not so much SSB, but of course, it didn't sit well with her. Not the best situation. She later deviated a bit south in the next states while I was headed east fast to NY (five day drive). My trip was totally unplanned – just go go go to NY.

Well, this was the same with Ed. He had a few days before he had to be back in KS, and just zipped around New England. Some places he had dozens of contacts, some he settled for just a handful. You only need one for 'transmit credit'.

Sad to see Peter pick up and leave. It was an unplanned collision and I'm sure he would have cleaned up a lot of needs. Ed wasn't always easy to work with the band conditions they way they are – and some days good, some nasty.

Back to park chasing.....didn't get too far today.

Last today was **Cumberland Mountains State Park** – KFF 2934 in Cumberland TN – another ATNO- all time new one – never given out before.

From the web:

“Cumberland Mountain State Park is situated on the Cumberland Plateau, a segment of the great upland, which extends from western New York to central Alabama. It is said to be the largest timbered plateau in America. Cumberland Mountain State Park began as part of the greater Cumberland Homesteads Project, a New Deal-era initiative by the Resettlement Administration that helped relocate poverty-stricken families on the Cumberland Plateau to small farms centered on what is now the Cumberland Homestead community. This 1,720-acre park was acquired in 1938 to provide a recreational area for some 250 families selected to homestead on the Cumberland Plateau.

The park is located around Byrd Lake, a man-made lake created by the impoundment of Byrd Creek in the 1930s.

The Bear Trace at Cumberland Mountain Golf Course is one of the most sought-after sites among the Jack Nicklaus designed Bear Trace courses in Tennessee. The 6,900-yard, par 72 layout features a design that capitalizes on elevation changes as well as natural features, such as flowing brooks and clustered, mature pines.”

Found the park in Cumberland County – ran it successfully – and that was number 4 for the day.

Four parks and 152 miles driven while giving them out. 300 QSOs total. Success in each with enough Qs. A index was 4, K-1, SFI = 70 so still a few contacts were made on 17M. That would change as the SFI headed down to the 67-68 range where even 20M got real flakey and not as good. For the most part – 4 or 5 parks a day is 'doable' day after day. You can squeeze in one or two more but might not reach the magic '44' number if it's too early or too late or the band conditions are 'crappy' that day. Also it depends on how far off the main path the parks are – some are really in the boonies – and many have no internet to attract contacts when off the beaten path.

Bill, NU0Q was till on his big, big trip, Ed, K8ZZ was in New England, and Kraig, KA2LHO was putting out FL parks today.

Headed into the Baymont Inn in Crossville TN. Dinner at the Shoney's – seafood buffet

night. OK – not great.

Saturday 8 11 18

Today I've got to make some miles toward Henrietta NY – too many days of just parks and not putting too many miles on the car. Just a few parks today

First up Seven Island Birding State Park KFF-2985 in Knox County TN.



From the web:

“The diverse natural landscape of aquatic and grassland habitats makes Seven Islands State Birding Park a premier birding destination with more than 190 species of birds sighted. The park encompasses 416 acres along the French Broad River in Knox County, approximately 19 miles east of Knoxville. This peninsula of land features more than eight miles of natural trails, rolling hills and views of the Smoky Mountains. In addition to being a wildlife refuge popular for hiking and wildlife observation, the park is a research and educational facility for schools and other groups and a demonstration area for land use and habitat management techniques. Songbirds, hawks and waterfowl can be seen along the meadow trails and several old barns are a favorite refuge for Barn Owls. For paddlers and anglers, there is a small canoe/kayak launch that provides access to the French Broad River. “

Not much there- pulled it – sat in the parking lot with half a dozen other cars – and did my runs. Went well and left after 90 minutes.

Now I'm trekking up I-81 into VA headed toward I-77 up into WV.

One more to go in TN – **Warrior Path** KFF-2982 in Sullivan County TN.



From the web:

“Warriors’ Path State Park was named for the Great Cherokee War and Trading Path. Since that time, the park land has known a long history of travelers and is still a pathway for modern-day outdoor enthusiasts. The 950-acre park is located on the shores of the Patrick Henry Reservoir on the Holston River.

The park is home to premier boating and fishing activity, hiking trails, an internationally-renowned mountain bike trail system (which is a designated National Recreational Trail), nature education program and a nationally recognized golf course.”

OK....missed all of that other than making QSOs from the parking lot – then heading out. I can squeeze in one more today.

Hungry Mother State Park -KFF-1303 in Smith VA.

“Long a family favorite known for beautiful woodlands and a placid 108-acre lake in the heart of the mountains, Hungry Mother has a sandy beach with bathhouse, boat rentals (fishing, canoe, kayak and paddle), a boat launch and a universally accessible fishing pier.

The Legend of Hungry Mother

Legend has it that when the Native Americans destroyed several settlements on the New River south of the park, Molly Marley and her small child were among the survivors

taken to the raiders' base north of the park. They eventually escaped, wandering through the wilderness eating berries. Molly finally collapsed, and her child wandered down a creek until the child found help. The only words the child could utter were "Hungry Mother." The search party arrived at the foot of the mountain where Molly collapsed to find the child's mother dead. Today that mountain is Molly's Knob, and the stream is Hungry Mother Creek."

Had a successful run and headed out back on the road to put a few more miles on the car today. That was the plan. As I headed north on I-77 into WV.....things came to a crashing halt. It took 90 minutes to go 20 miles – construction – backup for 20 miles just before the tunnel into WV. You literally sat in the same spot for 10 minutes at a time. Not fun. Avoid this if possible. It goes down to one lane- which they close every few minutes to allow construction vehicles to go back and forth. Finally got to Princeton WV and a Microtel Inn there for the night. Just a short run in Mercer before QRT at the motel. Very frustrated to say the least! Dinner at Ryans Buffet – good. I'd have time for a few WV parks tomorrow, then have to zip up through PA and NY to get to destination in time for the convention!

Sunday 8 12 2018

This morning I headed to Hawks Nest State Park – high up. However, the GPS lady took me on some very winding, very very winding roads that went all around, then way way down, down, down, then finally way back up a winding twisting road to this high up state park in Fayette County WV. Nice parking lot – a big lodge there – and just a wee bit of internet to allow spotting. Run went well.



From the web:

“Nestled in the heart of whitewater rafting country, Hawks Nest State Park is a 270-acre recreational area with a nature museum, aerial tramway, jetboat rides, hiking trails and one of the most challenging whitewater boating waterways in the nation. Its 31-room lodge offers luxurious rooms, dining and spacious conference and meeting facilities. Located near Ansted in Fayette County, about 10 miles north of the New River Gorge Bridge, Hawks Nest is known for its scenic overlook, which provides a bird’s eye view of the rugged New River Gorge National River below. “

Had a good early morning run – 1203z. 8 am EDT. Lots of things to see and do here but I was making tracks today headed north. Weather was decent – a good day or two in between the days and days of rain and more rain.

I'm still headed north and hit **Carnifex Ferry Battlefield State Park** next – in Nicholas County. KFF-1807. From the web:

“Set on the rim of the Gauley River Canyon, the 156-acre Carnifex Ferry Battlefield State Park is an important Civil War battle site. The park is part of the Civil War Discovery Trail, which links more than 300 historical sites in 16 states, and commemorates the 1861 Battle of Carnifex Ferry, a major Union victory that led to the eventual Confederate withdrawal from western Virginia. Carnifex Ferry is one of the oldest state parks in the United States and is a popular site for Civil War reenactments.”



Ron, N5MLP is working me on cw in most of these parks/counties. He's been active now on cw for a couple weeks. Soon he'll be putting up a 30m dipole to chase the counties there in the sunspot minimum. Looks like N4UP has disappeared. Bill, NU0Q still out Montana way. There are quite a few parks on the air during weekends.

Next up is **Stonewall Resort State Park** , KFF-1822 in Lewis County WV. From the web

“Set along the shores of the 2,600-acre Stonewall Jackson Lake and surrounded by 13 miles of hiking trails, Stonewall Resort offers ample opportunity to enjoy nature. The lake is popular with anglers and known for its muskellunge, crappie and bass fishing. The resort also features an indoor/outdoor swimming pool and hot tub, and golf on the Arnold Palmer Signature Course. The Marina at Stonewall Resort offers boat and slip rentals. Special passes to multiple attractions also are available and include unlimited sessions with kayaks, canoes, road bikes, standup paddle boards, an indoor rock climbing wall, miniature golf and more.



Stonewall Resort State Park is one of West Virginia’s newest state parks. The park and lake were completed in 1990 as a project of the U.S. Army Corps of Engineers, which purchased the property to build a flood control dam. The lake and state park are named after Confederate General Stonewall Jackson, who was born in Clarksburg and raised in nearby Jackson’s Mill. Since 2002, Stonewall Resort has been operated by a private developer in partnership with the state.”

I head into Carlisle PA – Cumberland County – and it starts to rain. Super 8 Motel = Diner nearby – stuffed chicken dinner – good. Rained all night long, and rained for the next couple days – sometimes downpours. Much of PA is experiencing flooding and other parts are under flood watches. Inches and inches of rain are falling across the

state. It was raining so hard the satellite TV in the motel room failed...no signal through the rain. Oh well.... Now it was time to just run counties as I headed north – no parks for a while till I get to upstate NY. Peter, K0BAK, had a flooded basement – again over in eastern PA.

Sunday 8 13 2018

Just drove through the rain, sometimes very heavy at times, headed north. Ed, K8ZZ/m was in Providence RI putting them out. Headed up route 81 headed way way north in NY state. Right up I-81 for miles and miles to near Watertown. NY. Now had some time to run some parks after noon. Rained all day. All the way. Still raining and yukky but at least not as hot as TX. In NY it was 60s and low 70s the whole time I was there – and that was over a week. Rained most of the days too! If you are going here – go in summer. Watertown NY is known for 10 foot deep snows in the winter time! Lake effect snows that bury the entire area around here! No thanks. Meanwhile in TX the temps continue near 100 most days. It's a good time to 'be gone'.

Got up to **Southwick beach** KFF-2142 at 1700z and proceeded to put it out – Jefferson County NY – a bit off the beaten path. From the web:

“Southwick Beach State Park is a New York State park that lies along an unusual stretch of sandy beach on the eastern shore of Lake Ontario. The park is 464 acres in size with a 3,500 foot length of beach, and is visited annually by about 100,000 people.”

Did OK – a few DX, one or two west coast stations. Ed, K8ZZ/m was in RI.

Had time to hit **Robert Whele State Park**. These are all along the shore of Lake Ontario – park after park. KFF 2126 and still in Jefferson County. Did OK – one park to park with Gary, N5PHT out west a bit in IA. He camps out in parks for days at a time in his RV.



From the web:

“Robert G. Wehle State Park is a 1,067 acre state park on the eastern shore of Lake Ontario in Jefferson County, New York,

Between 1895 and 1947, the property was used by the United States Armed Forces as a training grounds, and was known as the Stony Point Rifle Range. The rifle range was used by Madison Barracks, Fort Ontario, and Pine Camp, now known as Fort Drum. The site was also used for artillery training, anti-aircraft training, and temporarily used as a landing field. Remnants of the site's military history are still visible at the park today.

The property was purchased in 1947 by Rochester car dealer Thomas Nagle and Genesee Brewing Company owner Louis A. Wehle for use as a Hereford cattle ranch. Louis Wehle's son, Robert G. Wehle, acquired the property in 1968. Wehle used the property as a summer home and kennel.. Prior to his death in 2002, he arranged for the property to be sold to the New York State Office of Parks, Recreation and Historic Preservation, who purchased the parkland for \$2.8 million. The park was opened to the public in 2004.

Approximately 17,000 feet of Lake Ontario shoreline, some of which is fronted by limestone cliffs up to 80 feet high, is accessible within the park”

Still more time, so hit **Sandy Island Beach State Park** KFF 2134 in Oswego County. Did OK with the county hunters and park hunters in the log.



From the web:

“Sandy Island Beach State Park is part of the Eastern Lake Ontario Dune and Wetland System, a 17 mile stretch which extends from the Town of Richland, Oswego County, north along Lake Ontario to Jefferson County. The Dunes were formed by wind and wave motion of a giant inland sea that preceded Lake Ontario. The area is the only significant freshwater dune site in the northeastern United States. The Eastern Lake Ontario Dune system offers many opportunities for hikers, birdwatchers, canoeists and kayakers. Walkovers and viewing platforms have been built to protect the fragile dune environment.”

Time for a motel – 2 nights at the Evergreen Inn in Oswego. No Wyndham rewards properties there so did something different. Inn OK.....a bit out of town. It's a 50s/60s style 15 room affair – that seems popular when the weather is good. Seemed like half the rooms were empty – likely weeks of rain didn't help the tourist situation. Rained most of the time I was there.. Dinner at Ruby Tuesday that night.

Tuesday 8 14 2018

Third day of nothing but rain and more rain. I headed out to run some parks after breakfast at Dayn's Cafe. No breakfast included at this motel.

Next up – **Selkirk Shores** SP, KFF 2138 in Oswego County. A lot of the parks are in Oswego. No one there to collect \$\$ as it was pouring down rain with thunderstorm warnings. Most of the beaches along this strip were closed due to weather warnings – but the parks were open otherwise. Most of these parks are \$4 to \$8/day charges when things are 'open'.

From the web:

“Selkirk Shores State Park is a 980-acre state park located in Oswego County, New York. The park is located on the eastern shore of Lake Ontario.”



After that, it's to Mexico Point SP KFF 2105. This is a small place – parking lot for maybe 10 cars – and you WALK a good bit to get to the beach. Raining cats and dogs so was there all by myself. (no entrance fee here apparently).



From the web:

“Mexico Point State Park is a 122-acre park on the eastern shore of Lake Ontario in the town of Mexico in Oswego County, New York. The park is located at the mouth of the Little Salmon River.

The property that was to become Mexico Point State Park previously featured summer resorts as early as the mid-1800s, including the Mexico Point Club that existed at the property from the early 1900s through the 1950s. During the 1940s and early 1950s, professional boxing champions Carmen Basilio and Joey DeJohn utilized the property as a summer training camp.

The property was acquired by the New York State Office of Parks, Recreation and Historic Preservation in the early 1960s, and remained undeveloped for many years. However, since 1992 the park has been developed and operated by the Town of Mexico after local residents encouraged the town to enter into a long-term lease of the property with New York State. The state retains ownership of the property.”

You can run this at two places – including the 'boat ramp' apparently. I went to the main part of the park in the downpour rain. No joy for other tourists.

I'm just taking it easy – making a big loop around from the motel. Next up is **Battle Island SP**. Not sure there is much more here than a golf course, and areas you can't easily get to (no parking lots), so ran it at the State Park Golf Course. KFF 2009 and still in Oswego. NU0Q is out in MT at this time. Catch him and log him

from the web:

“This park derived its name from a battle which took place on a nearby island on the Oswego River in the mid-1700s. In 1916 most of the land owned by F. A. Emerick was deeded to the state. Battle Island officially became a state park in 1938 when the remaining land was turned over. The popular course near Fulton lies adjacent to the Oswego River and offers golfers magnificent views from a number of its fairways and greens. The 18-hole Battle Island State Park Golf Course is a challenging one for the "budding professional" and amateur player. The park also is used in winter for cross-country skiing.”



Fair Haven Beach lies on the shores of Lake Ontario – KFF 2052 in Cayuga County NY

from the web:

Fair Haven Beach State Park is a 1,141-acre state park on the southeastern shore of Lake Ontario in upstate New York. It is located on the east side of Little Sodus Bay in the town of Sterling in Cayuga County, northeast of the village of Fair Haven. The southern part of the park is sometimes called Fair Haven State Park.

The park covers shoreline bluffs, sandy beaches and adjoining hilly woodlands. Inland, the park includes Sterling Pond and Sterling Creek. “



The beaches were closed due to severe weather – no tourists around other than a few brave souls hiking in the rain!

Tuesday night was spent at the same motel in Oswego – the Evergreen Inn. Dinner was at the Chinese Buffet downtown. In the morning breakfasts at Dahls Cafe again. Great breakfasts.

Wednesday 8 15 2018

Time to head on in to Henrietta NY and the Antique Wireless Convention – have to get there before 4pm or so – so there is still time to run a park or two on the way in!

Let's see – **Chimney Bluffs State Park** KFF 2034 in Wayne County. That should be popular as Wayne is not run very often. From the web:

“Chimney Bluffs State Park is a 597-acre state park in Wayne County, New York. The park is situated on the southern shore of Lake Ontario. From the park's hiking trails, visitors can view the large clay formations at the water's edge for which the park is named.

The bluffs are formed from eroded drumlins, teardrop-shaped hills of glacial till that were deposited and shaped by glaciers during the most recent ice age. The erosive power of wind, rain, snow, and waves has formed the landscape into sharp pinnacles. Although the pinnacles and cliffs, some of which rise up to 150 feet above the lake shore, have existed for thousands of years, they are constantly changing and further eroding. The average erosion of bluffs is one to five feet per year. The Lake Ontario shoreline from Sodus Bay to Oswego has many bluffs, of which Chimney Bluffs is the most visited.

Smugglers used the area as a landing point while transporting liquor from Canada during

Prohibition. The area was acquired by the state of New York in 1963 after having previously been operated informally as a privately owned recreation area. It lay undeveloped until 1999 when a parking lot, service building with heated restrooms, picnic areas with grills, and hiking trails throughout the park were added. It is considered a year-round park for hiking and picnicking in the summer. Swimming is prohibited. Winter activities include cross-country skiing and snowshoeing; a trailhead for snowmobiling is also located within the park”

OK....you won't catch me here in winter! No snow**mobiles** for N4CD!

I can get in a repeat of a park that I only had a dozen contacts – **Irondequoit Bay**. Last time I was here, the entire place had S9 noise across all the bands. I'd try my luck to see if I could get more QSOs to reach the magic 44 number (you can do it on multiple visits).



From the web:

“Irondequoit Bay State Marine Park is a 44-acre state park and boat launch located in Monroe County, New York, north of the City of Rochester. The park is operated by the Town of Irondequoit and primarily facilitates fishing and boating access to Irondequoit Bay and Lake Ontario.”

There's not a whole lot there. I parked in the boat launch area and made my runs. Did get more than enough to have 44 cumulative QSOs. Now I'm a happy camper and there was no QRN at all today. Go figure!

I can hit one more on the way in – another repeat just a few miles from the hotel for the convention – **Lock 32 Canal State park** KFF-2097 in Monroe County. You've got Lock 32 on the Erie Canal here – plus there's a White water Park with rapids where you can play. Pulled in and used the CWT to get a few contacts in the log. The K index was up at 4 today. Yuck Yuck Yuck for propagation! Then ran on CH freq and POTA frequencies for a decent run overall.



Then I finally headed in to the RIT Conference Center in Henrietta NY – just south of Rochester.

Continued in Part III

Mobile Activity in August

At the end of July

Barry, K2MF ran the boroughs of New York City.

Darl, NA8W, spotted in OH, PA counties

Mike, NF0N, noted out and about in NE putting out many.. Then into SD, WY

AB7RW noted out and about in OR, WA, CA. Lots of CA counties run. Then into NV. UT To CO, OK, TX, NM, AZ, to UT

WY0A noted running OK and TX counties

W0GXQ, Jerry, spotted in WY

Bob, WA3QNT, was in NY and PA Counties putting them out.

AF5CC spotted in OK and MO and IA.

Fred, K0FG, noted out in MO

Rick, AI5P, put out some in CO and AZ

Ed, K8ZZ headed east – helping move someone so no counties on the way east – then ran all over NJ, NYC area, RI, CT, MA. Later zipped back home to KS.

Kraig, KA2LHO, made several trips around FL – parks and counties

Bob, KA9JAC, was busy putting out parks in WI the whole month. Made it to MI upper part, too.

Jim, N9JF, was on many days traveling here and there – IL, IA, KY, OH

Gary, N5PHT, spotted in IA parks many days during the month – always in a park in his RV portable.

Seth, N3MRA, was noted in counties out west

Bill, NU0Q started out on his trip west – SD, ND, MT, ID, WA, circled around back through MT – headed home after a couple weeks to get set to run in the KS QP.

Jack, WD4OIN, was heard from NC counties.

N5KUC ran counties out in west TX

Peter, N4UP ran counties up in PA

Ray, WB0PYF, seen on the spotting site in MO counties

Don, K3IMC, put out AL counties then headed north to NC, VA, MD, NJ. CT, Into NY at the end of the month in Queens.

Norm, N9MM noted portable in MI, TX, OH, IL TN from parks. He's moving to TX down by Houston and house is still under construction.

K0DEQ was out in MO and AR at the end of the month

end date 8 28 2018

Wow! Several very busy mobiles this month – K8ZZ, NU0Q, AB7RW, K3IMC – all out on long trips! Loads of counties! Weeks of travel.

On the Road with N4CD III

At the convention – finally arrived at the yearly Antique Wireless Association event in Henrietta NY at the RIT conference center, very convenient to I-90 (NY Thruway). It lasts 3-4 days every year about this time. There's a good schedule of programs, an outdoor flea market, a book seller market, programs, dinners, and an auction to end it all.

For me, first up was a visit to the AWA Museum – world class – in Bloomfield NY about 20 miles away. They keep expanding it and adding exhibits. It definitely is worth a visit!

Here's the web site:

<http://www.antiquewireless.org/museum.html>

Do take a look! Well worth the time

Here's the Marconi Room



This is a replica of the Titanic Radio Room – complete with ORIGINAL equipment from the early 1900s. The units on the desk sell for \$30,000 each (if you can even find one for sale) and you won't find a better display. Marconi never sold equipment, just leased it to ship operators.

Got the urge to get on the air circa 1910? Here's a typical spark gap transmitter set up – complete with rack of wet cell batteries on the left. The vast majority of houses in 1920 did not have electrical service.



There are loads of nice full resolution pics on the AWA web site – do take some time to visit it! You'll also see hundreds of typical ham radio gear there – all the Heathkit, Hallicrafters, Nationals, etc, plus stuff you have likely never ever heard of.

Got to urge to get on the air with High Power? They've got a full Voice of America transmitter setup – many tens of KW's – including the full control console! Racks and racks and a 3 side control desk!

There are displays of early tubes and unusual tubes, early TV including scanning disk sets. More than enough to keep you busy for a few hours.

Each year, hundreds of kids tour the museum – they have loads of 'hands on' displays and things for the kids to play with for their amusement and education.

After a while there, I headed back to the hotel for the evening.

On Thursday the outdoor flea market starts at 6am. I wandered there at about 7:15. Sadly it's only a remnant of what used to be. Back in the 1990s up to the early 2000s, you'd have 200 sellers offering stuff for sale. Getting a space was a challenge. Now, in 2018, it seems there's only 30-40 people selling things in the flea market. Too many of the radio collectors aren't collecting these days - and probably trimming down their collections and junk piles as the grey hairs start to appear. Getting new people involved in collecting old radios is getting to be a challenge. (Sort of like county hunting).

Nothing of interest appeared. It didn't take long to make several trips all around. I went back inside and perused the book fair. I'm not seriously collecting books these days either – have too many as it is – hihi. Didn't find any early radio fiction books either – seems like I found, read, reviewed, and then sold just about everything out there.

Golly – there aren't any interesting programs for me on the schedule on Thursday afternoon so why not sneak out and run a park today? **Honeoye SP** was only an hour away and it was an ATNO – never run before park! I zipped on down there to Ontario County – with Livingston NY along the way. The bands were in rotten shape and I struggled to get to 44. Went to 17m cw for 3, then 20m SSB....and finally down to 40m SSB for a couple. Tough day! Did manage to do it. This is more a boat launch place than a park. There was a 'self register' machine (like at ATM) but I hoped I'd get away without doing it – it was mainly for the boat launch people. Not much beach here at all – like next to none.

Thursday night there's a buffet dinner and the Collins Collector meeting session with a program on Collins Military gear 1955-1970.

Come Friday and there's the member meeting in the morning and several programs on pre-1912 wireless and spark gap era stuff. During the day, there's the exhibition area where folks bring their 'collectibles' and display them in the various categories for competition for 'best of show'.

In the evening there's the big banquet, awards for the contest displays, entertainment...and afterwards a preview of the auction to occur the following day. I did not see anything I had to have or even had much interest in, so it would be on the

road again on Saturday headed east to Warren County NY – about 5 hours the short way.

Hawaii QSO Party

I was mobile at the time this was happening – caught Maui and Hawaii counties but nothing else heard. I really didn't look seriously for others.

KH6LC - 1000Q CW from Hawaii County HI

Awkward weekend on the radio...Saturday's conditions were great but we were hampered by rain static and lightning...On Sunday morning the noise was gone, we could literally hear a pin drop, but a geomagnetic storm ruined conditions...15 was a total bust and 20 was slower than...well, you know...We threw in the towel at 1000 Q's...We apologize to the many callers we couldn't pull out of the noise on Friday and Saturday...Thanks for the contacts.

KA6BIM - OR 20 cw 9 ssb 3 digital 16 mults

Scarce activity, even with good propagation. I expect the activity was impacted by the pending hurricane. It was a nice opportunity to chat with friends from the islands.

K4BAI- fixed - GA 5cw 1 ssb 6 mults

Generally bad conditions and particularly for the last few hours of HQP. Don't know that I have ever heard conditions so bad on as many bands as they were from about 2300Z Sunday until 0330Z at least Monday. Glad to know that the Hawaiian stations and operators I worked are OK after the storm and wish the same for all others. Thanks for the QSOs. 73, John, K4BAI.

KH6TU 336 cw from Maui

Big thank you to everyone that called, and to event manager Alan at KH6TU!

CW only for me...Again this year the Europeans were waiting for us Friday night, very cool! Participation was down, many of us were preparing for hurricane conditions, or dealing with torrents of rain.

A short opening on 10m -- nice surprise! A major magnetic storm at the end -- bad surprise!

The coupled resonator dipole does not like to be under water on 20m, so lots of fussing to keep the radio happy. Hope to have some better antennas next year...see you then!

Aloha & 73~ Stan AH6KO

KN4Y - fixed FL 6 cw 5 mults

What a surprise, with reports of storms in the vicinity I did not expect to hear a Hawaii station in the QSO Party.

On the Road with N4CD IV

After the AWA convention, I headed east. First park is **Seneca Lakes State Park** on the shores of one of the finger lakes region. KFF-2139. I'm there early in the morning – it's drizzling but clearing up. Lots of rain on this trip. There are a few joggers about but it's cool and not much going on.



From the web:

“Seneca Lake State Park is a 141-acre state park located in Seneca County, New Yor. The park is at the north end of Seneca Lake, one of the Finger Lakes.”

I do OK....conditions are horrible with A=13 and K=4. Yuck.

Next up is **Pixley Falls State park** KFF-2122 which is way way way out in the boonies. No internet here at KFF-2122 and horrible radio conditions, too, don't make for successful runs. No cellphone either. No one had activated this park before either.

From the web:

“Pixley Falls State Park is a 375-acre New York state park located in the town of Boonville in Oneida County, New York,

The park gets its name from a 50-foot waterfall called Pixley Falls, accessible via a short hiking trail. The park offers picnicking, a nature trail, hiking, fishing, seasonal hunting,

and cross country skiing. The park has steep wooded hills, a mountain trout stream, and a trail that runs along the ruins of the 19th-century Black River Canal.

Camping, once permitted at the park, has not been allowed since the park became day-use only in 2010”

The park sits down in a deep valley and is shielded by a mountain ridge to the west. Worked mostly county hunters – got up to 29Q – but could not get a run going on the POTA frequencies. No success here. Usually half my contacts come from county hunters, the other half from POTA folks. With rotten conditions, not many are listening.

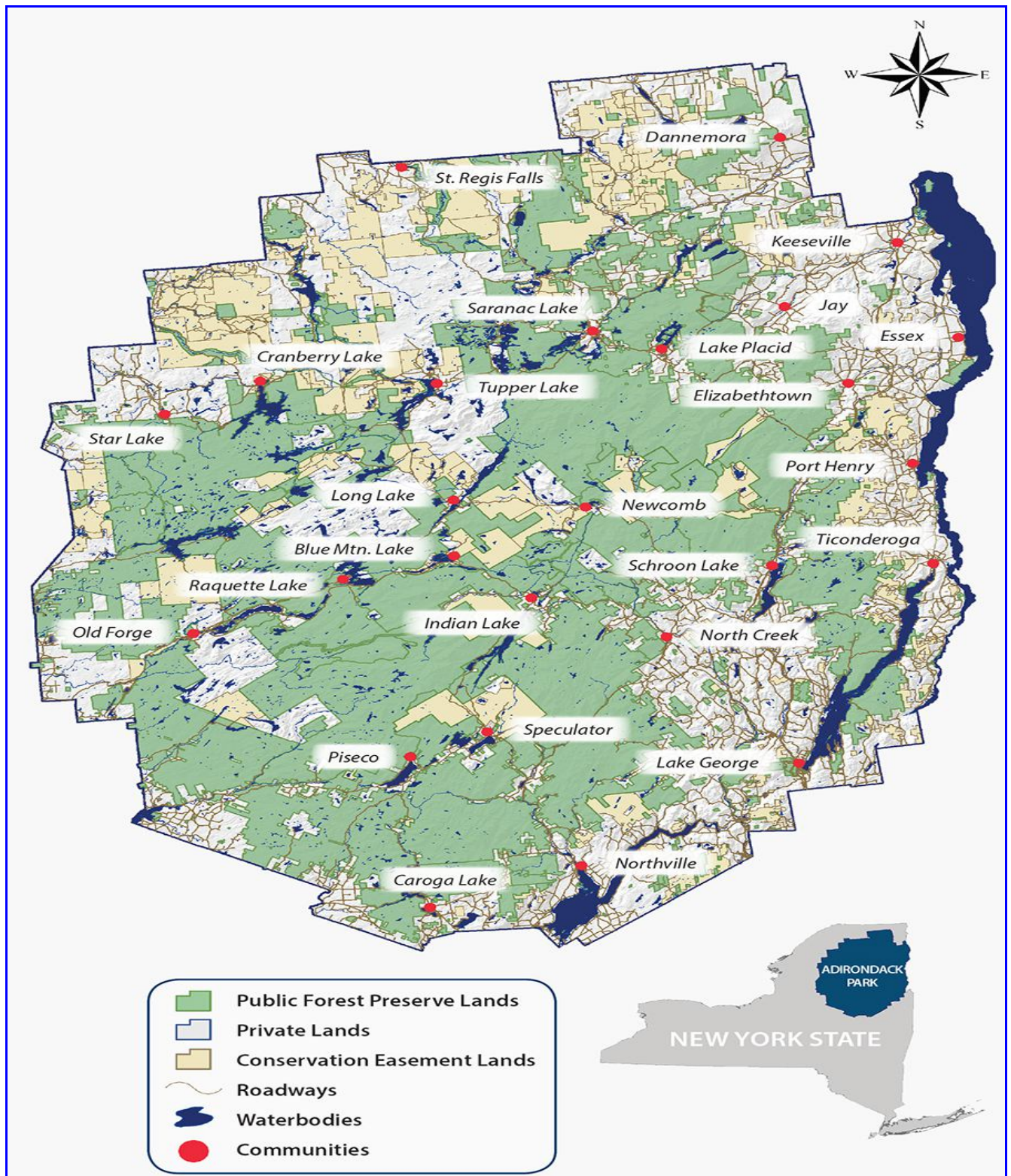
After I head north on a special detour to Lewis County NY for a LC. Success there- then head east across the vast stretches of NY.

After you enter Herkimer County, you see the sign for **Adirondack State Park**. KFF-2001. This is a huge park spanning a half dozen counties – 6.4 million acres of land – nearly 10,000 square miles of park. Within the park you have something like 100 small (I mean small) towns – and legacy property – but most of it is 'forever wild'.

From the web:

“The Adirondack Park is unique in that it's a mix of private and state-owned land. This strategic model has allowed New York State to protect our beautiful forests while residents live and work in the Park and visitors enjoy exploring the Park’s lands and waters and experiencing its rural communities.

More than half of the Adirondack Park is **private land**, devoted principally



to the 105 towns and villages, farms, working forests, businesses, and communities. The Park is also home for 130,000 permanent and 200,000 seasonal residents, and

hosts 10 million visitors yearly.

The remaining 45 percent of the Park is publicly-owned **Forest Preserve**, protected as “Forever Wild” by the NYS Constitution since 1894. These lands are one of only two constitutionally protected landscapes in the world.

One-million acres of these public lands are protected as Wilderness, where non-mechanized recreation may be enjoyed. The majority of the public land (more than 1.3 million acres) is Wild Forest, where motorized uses are permitted on designated waters, roads and trails.



So here you are driving along in Herkimer County – forest and park all around – and there is NOWHERE to pull off and run the park! No where! The road just goes and goes and goes. Every now and then, there is a village (not really in the park) but other than the one or two villages – not much of anything. You get to Hamilton County – and still there is no where to pull over. 70 miles of two lane road.....and not one road into the forest or off the main road other than a driveway here or there. After Speculator NY, there are 3 or 4 river access points you can stop at and 'run the park'! Finally!

It's KFF-2001 – I can run it in Hamilton County at one of the access points. Likely there are other spots too. Whew...A index is 13, K=3 and SFI only 67 – meaning sick conditions even on 20m – and not much on 40 and 30m. Do squeak on by with enough – barely. Likely I'll run this again. A few more hours and I'm at the sister's house in

Warren County NY on the shores of Lake George.

Now for a day or two of rest.....

continued in Part V

Ohio QSO Party

Lots of activity especially from fixed stations – for this one. Conditions were not the best. A couple of mobiles were out.

K8YR - EOC 214 cw 215 ssb

Activated our EOC this year as a club effort. had a few problems, shorted PL-259 at the yagi. local storms with lightning put us off the air for a while. Intermittent noise S-9 sometimes. Our EOC is in a retired OSP post next to I-70 and a truck stop. Noisy. Added a tri-band yagi and dipole to our existing EOC antenna's. used two stations, One on 40 alternating ssb/cw. one on 20 and 80.

K8MR mobile 762 cw 91 ssb

Another good ride around Ohio. This year I was joined by Barney, K3LA, one of my longest ham radio friends from back in Sharon, PA, where we grew up. As noted by everybody else, a slow start followed by somebody turning on the 40 meter short propagation switch around 2200Z, and ending with a major geomagnetic storm. In spite of this it was my biggest OhQP mobile score since 2012.

We got sidetracked by a road closure in Hocking county, and proceeded to get sufficiently lost that we ended up in Fairfield county rather than in Ross and Pickaway as planned. The unplanned half hour there accounts for the big total, which may be my biggest single county total in OhQP.

Most phone QSOs were moving guys from CW, plus calling a few for multipliers. We had zero responses to our phone CQs. OM2VL was the most worked with 45 QSOs, including six on 80M. Next most worked were KU8E (33) and K5KG (27). Most worked state outside Ohio was Florida.

The use of 3545 as a mobile frequency worked well, as I was able to efficiently get some daytime QSOs with other Ohio stations, which would have been impossible on 40M given the propagation. The two high band QSOs were with K1LT, as we passed within a mile of his QTH.

Thanks to all we worked and to all that participate. I hope to be out in the PaQP in October, and looking way ahead, Florida next April.

73 - Jim K8MR

K8O mobile (K8NZ, W8CAR ops) 529 cw 77 ssb

great fun except for condx,detours,storms and antenna problems!

K8T fixed - (AD8J, W3NO, WA3C ops) 633 cw 1360 ssb

Three guys running three stations for the full 12 hours was a grind. The goal was to break the M/M record and we accomplished that. Having the special call and being almost the only station on in Jefferson County was a big help. We managed to work K8MR/M 21 times, K8O/M 13 times, K8RYU/M 8 times, W8UE/M 5 times and AE8M/M 3 times. Thanks to all the other stations that gave us contacts.

AA8HH - fixed in FL 77 cw 14 ssb

Always a fun QSO party. Struggled with a temporary antenna erected just for the contest. Had to shut down during a torrential downpour and lightening storm which is often the case during OQP.

On the Road with N4CD V

I couldn't sit still for long. Come Sunday and I decided to go up the mountain to a trail access point – and put out Adirondack State Park KFF-2001 again. The A=5, K=1 – so should have somewhat better propagation – and could put out Warren County again.

It was unbelievable that NO ONE had run this park before. Several million people visit this park every year! Over 200,000 live there in 'season'. You really don't want to be in most of this park in the winter time. Old Forge NY and Speculator are often vying for the coldest spot in the US in the winter time with temps of 40 to 45 below 'normal'. You get feet of snow and it piles up – and most of the terrain is steep mountainside in the park. You really have winter there – great if you are a skier with world class ski areas – or snow mobiler – or are into winter sports like ski jumping, and world class ice skating – at Lake Placid.

After that, I headed up to Ticonderoga NY in Essex County and put that out, then over to Washington County. (from the house, Washington County is 3 miles across the lake – but it takes nearly an hour to drive there!). Ran Washington NY with a good crowd piling on – then decided to go put out Addison VT – about 20 miles up the road from Ticonderoga across the 'free bridge'. You can take the ferry at Ti for \$10 round trip otherwise. After Addison VT, then back into NY.....well, what do you see when you hit NY state? Yup, a big sign for Adirondack State Park – and find a place to run it again!



This one is 150 miles from the other one at the west side!

Then on to the sister's QTH. For the next two days – no radio!

On Wednesday it's once again time to head west to Chicago via a few parks. I've got 2 ½ days to get there so I hit a few on the way. First, I head back across from Warren, through Hamilton, Herkimer, Oneida over to **Cayuga Lake State Park** KFF 2029 in Seneca County. I arrive to catch the last 15 minutes of the weekly Wednesday 1900Z mid-day session, then run on the CH and POTA frequencies to get the count up over 44. Conditions are so-so.

From the web:

from the web:

“Cayuga Lake State Park is a 141-acre state park located on the north end of Cayuga Lake which offers a beach, a playground and playing fields, picnic tables and pavilions, recreation programs, a nature trail, showers, fishing, a boat launch, a dump station, cabins with view of the lake, campground for tents and trailers, sledding, cross-country skiing and ice fishing.”

OK...you won't catch ME there ice-fishing. No way! hi hi

Next up is **Darien Lakes State Park** KFF-2043 in Genesee County. I get enough using 40M SSB to reach the goal.

From the web:

“Darien Lakes State Park is a 1,845-acre state park in western Genesee County.

The park has 154 campsites, the majority with electrical hookups, and operates primarily as a campground. This portion of the park is open seasonally and mostly accommodates RV and trailer camping, although tent camping is available as well.

Besides the campground, the park also offers a beach on 12-acre Harlow Lake, picnic tables, a playground, recreation programs, a nature trail, hiking and biking, a bridle path, fishing, cross-country skiing and snowmobiling”

Ah, another park you won't find N4CD in a snowmobile this winter!



Time for one more today – **Woodlawn Beach State Park** KFF 2164 in Erie County NY
from the web:

“Woodlawn Beach State Park is a 107-acre park on the eastern shore of Lake Erie in Erie County, New York. It was opened as a state park in 1996, and has been operated since 2011 by the Town of Hamburg under a ten-year agreement with the New York State Office of Parks, Recreation and Historic Preservation

Woodlawn Beach was historically a popular swimming location and resort during the late 19th and early 20th centuries. Served by several trains and steamships, Woodlawn Beach at this time featured a hotel, restaurant, dancing hall, bowling alley, billiards hall, toboggan slide and a 30-acre picnic grove.”

Note de N4CD – there are many 'state parks' now run by towns under special agreements. This is just one of many in NY state (budget problems).



After this park, it was heading to the Super 8 Motel in Hamburg, NY, K8ZZ was in MO getting close to home. It rained all Wednesday from one end of NY state to the other end. However, with the rain, I got in all the parks free. At two of them, I just told the attendant I wanted to park in the close by parking lots for an hour or so, and they let me in. Otherwise it was \$7 or \$8 in the downpours just to sit. Worked out fine at two of the beach parks! Dinner at the Water Stone Gril Next door – trendy, \$\$ place but good.

Thursday 8 23 18

Bright and early, I appeared in Evangola State Park 2051. Well, 1145Z. Had to wait a while for county hunters and park hunters to show up. Squeaked by with 45Q

from the web:

“Evangola State Park is a 733-acre state park in southern Erie County.. Evangola State Park is open year-round from dawn to dusk, and offers a beach, picnic tables and pavilions, seasonal pheasant and small game hunting, hiking and biking, nature trails , a playground and playing fields (baseball, tennis, basketball), a disc golf course, fishing, ice-fishing, snowmobiling, cross-country skiing, and snowshoeing”

Ah....another park N4CD will avoid in winter! Now we have 'snow shoeing'! No thanks.



Continuing on the westward trek, next up is Lake Erie State Park in Chautauqua County NY. KFF 2092 in the system. I'm just about out of NY into PA. This is an area to be careful in the winter. Lots of lake effect snow – blizzards – snow drifts.

from the web:

“Lake Erie State Park is a 355-acre state park includes facilities and trails for hiking, cross-country skiing, birdwatching, fishing, boating and camping at one of its 97 campsites or 10 cabins. Swimming is available on scheduled days and times at the beach. An 18-hole disc golf course named "Shipwreck Bluff DGC" was constructed at the park in 2015.”

Have success and head on to the next one in PA – Erie Bluffs in Erie County PA, KFF-1350. Don, K3IMC, is just beginning his trip north up along the east coast. Ed, K8ZZ, is putting them out on the east coast.

Two more parks to go this trip!

Erie Bluffs, KFF-1350, is a nice park in Erie PA. Snow belt country – nasty in winter!



From the web:

“The 587-acre Erie Bluffs State Park lies along the Lake Erie shoreline in western Erie County

The park has:

One mile of shoreline - 90-foot bluffs overlooking Lake Erie - Uncommon black oak woodland/savannah.

The only developed areas in the park are the Elk Creek Access area and the Main Entrance parking lot. Erie Bluffs State Park is designated as a day-use park, with the exception of fishing and boating. Swimming is prohibited at the park.”

Not a problem for me. I pull into the main parking lot and run the county – and park. Get my 44+ and head on to the last park on the trip.

Last is Geneva State Park in Ashtabula OH. KFF-1952. Jim, N9JF, was giving out IL parks with the special call W9AWE. They've got an event going in IL to get all 102 counties on the air. Bill, NU0Q is still going strong out in MT. N4EX/P is still busy putting out VT parks. I work the county hunters and park hunters then head on in to a Days Inn for the night.

Friday 8 24 2018

Now it's time to hit the interstates directly to Addison IL for the Antique Radio Club of IL annual convention. Things start Friday evening with a big auction at 6:30. You've got to arrive sooner to check out what will be auctioned off – over 250 lots – everything from \$1000 Catalin radios to \$800 Atwater Kent breadboard radios, to a hundred plus 'wood' broadcast radios, an original Regency TR-1 'the first' transistor radio (\$350) and loads of other stuff from tube testers (\$25-550), test equipment, one National SW-3 with power supply (did not sell as reserve was too high), Edison wax cylinder players, several

early TVs (1940s), and much more. The auction lasted five hours into the late evening. I bought – nothing. No interesting short wave regen sets were up for bid, and I'm resisting expanding into other areas.

I hit the hay at the Hilton Gardens Inn (\$99/night). In the morning, they have a nice breakfast buffet with made to order omelets and a great 'breakfast bar' with just about everything there is to eat for breakfast. The flea market officially starts at 6am, but the sun isn't up at that time. I'm there at 7am as most sellers are setting up. Loads of stuff for sale – maybe 100 sellers – but don't find much to buy. Some of the same items that didn't sell at the auction are there.

Later in the day, I find two bargain Knight Kit Span Master radios for sale. One for 'parts' as it is missing knobs and tubes, and one complete but unknown working condition. \$20 each – can't complain. Didn't see anything else I really had to have so didn't buy anything else!

In the afternoon there were several talks – I attended one on 'The Early Heathkit Years – 1934-1955. Heath was buying and selling surplus equipment. After WW2, there was millions of pounds of no longer needed units – and parts – by the hundreds of thousands. Heath found themselves with loads of 5 inch CRTs and decided they could design and offer a low cost oscilloscope for \$39.

Thus, the first electronic kit offered was the O-1 Oscilloscope in 1947. These are 'rare' as only a few hundred were sold in a few months in that time period. The second kit was a VTVM VT-1 and a Radio Signal Generator G-1 and Signal Tracer T-1. It was followed by the K-1 All-Wave Receiver and several other kits following year.

There was the annual dinner Saturday evening – and good entertainment with the Eddie Korasa Jr Polka Band from Chicago. He's a well known music man who has played all over the country – been involved in music since 1976. His main instrument is now a 2 year old Baldoni Accordion. He's won many awards over the year.



After the evening entertainment, I hit the hay. It was a long drive home – 900 miles. Next day I hit the road early – put 700 miles on the car stopping in OK just north of I-40 at a Days Inn around 5:30pm. Dinner at the Sirloin Stockade. Next day drove the remaining 200 miles to home – and home before noon. Whew!

- - -

And that was the trip – 4500 miles – dozens of states – dozens of parks – dozens of counties. There were many 'lake' oriented parks, one civil war battlefield, a handful of “wildlife” areas of various sorts, half a dozen 'waterfalls' to visit, and lots of territory. Many interstate - 'green stamp' counties and quite a few off the beaten path. Thanks for all the QSOs and hope I gave you a bunch you needed.

73 de N4CD

Kansas QSO Party

FT-8 Category

K0L (KC0DEB op) - 216 digital QSO

Pretty much a "steady as she goes" mode. Actually, it was pretty relaxing working FT8.HI! Is anyone doing any other digimodes besides FT8 anymore? Really!

Even though it got quite crowded at times, this mode keeps amazing me at how easily it can dig signals out of the mush. 20w or less did the trick nicely on 20m, and <10w on 40m. (Somehow that droopy dipole worked FB on 40m)

I had a lot of fun this weekend and will look forward to KSQP 2019!

W0I (KR0L op) - 39 digital

I worked FT8 as W0I whenever I ran out of contacts wanting to talk to me on SSB. The band conditions were poor over a good chunk of the contest and this made for a nice opportunity to make some contacts. Neat to see this mode added this year.

- - -

Back to SSB and CW.....

K0A mobile (K5CM/N5KW) Multi 1740 cw 359 ssb

Conditions were fair on Saturday, but as other have noted Sunday was difficult, especially for the lower powered stations that were calling. Many times I could hear stations calling but could not pull the call letters out of the noise. I'm sure the very high "K" index on Sunday caused more absorption.

We drove 961 miles. The 2012 F-150 used 57 gallons of gas. Pam (N5KW) did the SSB operating and Connie (K5CM) made the CW Q's.

We spent too long at the starting county line just outside of Dodge, Sunday morning and just barely made it to the Chautauqua/Elk county line before the end of the party. That was a big mistake because the pile-up at the CHA/Elk line was huge. Pam blames me for constantly telling her to slow down hi hi....

Rig: K3 running 100 watts, Tarheel Model 200-Hp, Dell D630 laptop.
Thanks so much for the may stations that followed us around the state, and as usual, thanks to Bob for running the show.

73, Connie/K5CM/K0A and Pam/N5KW

N0R mobile (N5NA op) - 1485 cw

As noted by other reports conditions were poor, more so on Sunday. That being said I finished with 174 more QSOs and 1 more mult over my 2017 total. 156 of those QSOs were picked up Saturday.

Despite the poor conditions I worked the following DX: OM2VL(10), DL8USA(8), DK2OY(5), DK3DXX(5), IK0MHR(5), ON4AAC(2), R1DX(1), SM6CUK(1), and SM6YNO(1).

Thanks to everyone who called! The top 10 callers were: WB9CIF(41), N8II(32), W5LXS(32), W3DYA(28), K7SV(27), N6MU(26), K3WJV(25), WA8REI(22), KA6BIM(20), and K0W(18).

Station equipment: Elecraft K3, Scorpion SA-680 antenna, Dell Latitude D630 running CQ/X, and a Ford F250.

Thanks to Bob, W0BH, for organizing a GREAT QSO party!

And a BIG thanks to my wife, K5AKS, for driving!

73, Alan N0R / N5NA

N0W mobile (N0AC op) 1236 cw

We (XYL and N0AC) learned many lessons.

W0O mobile (W0ZQ op) - 1053 cw

Saturday morning, before the contest started, I was plugging in my computers power adapter into the cars power accessory port when the adapters tip fell apart, fell into the accessory port and shorted it out. Yes, smoke was released and yes the fuse worked as intended. The computers battery would only last about 2 hours and then I would be without logging or keying. Fortunately I always bring tools and parts with me in my Go Bag. After 10 minutes of work with wire, tools, and 3M electrical tape, I had MacGyver'ed the computers power adapter with Power Poles and was back in business. I did all this work while parked in front of a gas station and I was waiting for someone to ask me what the heck I was doing with wire, wire cutters, and weird looking things in my car, or for the local police to show up, but no one ever asked.

As a solo op, I drive, stop, run, then repeat. It allows me some time to enjoy the trip as I am not on the radio 100%. KS was beautiful and I spent most of my time in, or around, the Flint Hills. Although the weather was "hot" for this MN boy, the wind was moderate and keep me cool enough. Saturday afternoon it seemed to be the CA QSO party on 20m, but Sunday was different as others have commented on.

After the contest, Sunday late afternoon, while driving home through IA, I saw an awesome double rainbow, and later on at sunset I saw a red sun set with a simultaneous full moon rise. The fun thing about running mobile in the QSO parties is the things you see; its not the destination, its the trip.

Oh ya, the QSO party. A tip of the hat to W0BH and his group for a very fun event and a big thank you to all the op's who stopped by for a Q. At each stop I worked through any pile up to make sure that I worked everyone calling. LoTW will follow for those needing counties and grids.

73, Jon

N0E mobile (KB0LF op) - 226 cw

Great QSO Party. Kudos to Bob for his great organization. Thanks to all who called. CU next year, 73, Fred, KB0LF

K0I (KI0O, N0UMP W0DR ops) 880 ssb 37 ssb

Got a late start by about 5 hours or so. Dave W0DR and I attended the Joplin MO Hamfest. It was hard to get away from so many radio friends.

When we got on air the bands were quite down, many CQ went unanswered. After a few hours it got a lil better and finally at sunset ,40 came alive and some good runs took place. Sunday saw better condx from 20m as it came alive around 11am.

Bill N0UMP was at the wheel on Sunday when we had some awesome pileups on each county change.

Problems: The laptop would hang the rig in send until a couple taps on f1 and esc would bring it back to receive. I had to have some repeats because of this.

Saturday a couple wrong turns and the late start ate up time so we had to drop some counties off the list. Sunday a detour sent us back thru some Saturday activations altho we made quite a few Q's despite the fact.

Sunday we met a truck on a two lane road and with a lo of wind and the blast of air from the semi , a tri magnet mount came off along with two hamstix ,but luckily the ropes steadying the hustler mast on rear caught the flying mount and it was only dragging the whip ends on the road. the hustler mast was bent in the ordeal but not harmed otherwise. we cringed with every meeting of semi`s the rest of the trip !

This was the first time for trying to run mobile with an amp. A 500w solid state that I drove lightly to 250-350w depending on band. It seemed to do the job as I got some good reports and had some answering stations below my noise level.

Thank you all who took part for making it fun and special thanks to Bob ,W0BH who does so much behind the scene to Make it all happen...

I hope to take part in the KSQP for years to come and log many of you again.

73 Mark KI0I - K0I/m

N8II - fixed WV 341 cw 189 ssb 102 counties worked

It was quite a change from last year for several reasons. Last year I made 70 Q's on 15M and 11 on 10M thanks to Saturday sporadic E. There seemed to be none at least during the daytime this year and despite several checks, nothing was heard on 15. The other big difference was huge QSO support from W0BH with three 1x1 calls available for each

band slot; he also made a lot of moves to 15 which provided 6 Q's every time (3 CW/3 SSB). I was quite surprised to break 500 Q's without a big Bob Harder helping hand. The other mobiles were almost all there for long hours and I paid attention to the spots which helped the QSO and mult totals quite a bit.

A special thank you to Butch, WY0A operating K0O/M who spotted himself nearly every time he hit a new county (covered 35 or 36, the most). This made a lot of otherwise hopeless searches for him on 40 and even some on 20. To boot, he covered SW KS which was the most sparsely covered by other mobiles. I missed Butch in Finney on a dinner break (never heard anyone else there), but he provided at least 4-6 counties that would have been very tough otherwise. Even when the CW mobiles were in the noise on 40, Butch was readable/barely audible but always workable from way out in western KS!

K0I/M operated by Mark, KI0I and K0T/P operated by Tanner, KD0IRW also self spotted which really helped boost my score, thanks! Other mobiles worked many times included K0A, Con and Pam, W0B/N0Q, Bob and Aaron, Charles N0K, Bill N0U, Jon N0O, Bill N0W, Fred N0E, Alan N0R, Rob K0P, and Don N0T; many thanks to you all for all of those many miles traveled before and during the KQP!

Conditions from 20M down were good on Saturday; Sunday was another story with a disturbance which weakened signals on 20 considerably with the band closed until around 1445Z and signals noticeably weaker. The 20M mobiles were only weak after 23Z Saturday (skipping over eastern KS), first hour Sunday, and 1800-1930Z. On 40 some mobiles were unreadable or almost so from 17-20Z.

Many thanks to all for the QSO's; it was almost all S&P for me, maybe added 12-15 20M SSB run QSO's. I think I worked almost all of the 1x1's who were reasonably active. Thanks to W0BH and whoever else help organize the KQP and thanks for the generous awards. Hopefully, I will see a sweatshirt.

73, Jeff

KA6BIM - fixed OR - 210 cw 113 ssb 95 mults

Great Contest. I have not played in this one before. It was lots of fun and lots of action chasing all the mobile stations. Worked 59 of the 61 1x1 calls. Never found N0A or N0J though. Already looking forward to doing it again next year. Thanks for all the qso's! Outstanding effort by the mobiles!

Dave ka6bim

K4BAI - fixed - GA 151 cw 53 ssb 86 mults

Special thanks to N0D (WB9QAF) who gave me a QSO in Harper County, KS, the last county I needed all time. Look for me as K4BAI/M in the Alabama QSO Party next Saturday. Thanks for all QSOs. 73, John, K4BAI.

K4AMC - 105 cs 63 ssb 63 counties

Bad band condx here, but had fun. Thanks for Contest
73 Jim K4AMC

N6MU - fixed - CA 261 98 ssb 105 mults

Got the Sweep for the 8th year in a row. Had 101 counties at the end of the first session and the last four(WAB,NEO,CHT,COW)were all scheduled for Sunday. Then the A/K numbers looked terrible. I didn't hear a signal on 20 for the first 90 minutes but the mobiles peaked up at the right time and I got all four. Whew!

Thank goodness for a good logging program with all those 1x1s to keep track of. They sure kept it interesting. Despite the conditions, an outstanding turnout from all the KS guys. Much appreciated!

As always, big kudos to Bob, W0BH, for all his efforts. He had mobiles from seven surrounding states come to play. They knew a good Party when they saw one! The KSQP is one of the best Parties around. 73...

John,N6MU

N7JPF fixed OR 90 cw 21 ssb 63

Great contest KS!! Conditions were great to the PNW on Saturday and thankfully many, many ops were on 20m for those of us that couldn't work 40. Conditions were much more difficult on Sunday, but seemed to opening up about the time the contest was over.

Such is life living out in the west. Thanks to all the mob-ops! Great job.

KN4Y - fixed FL 87 cw 56 mults

Lot of fun activity, mobiles galore, good CW signals, but alas I had to leave for a few hours to a Church Shrimp Boil on Saturday and Church on Sunday.

September QST

There's a nice one page "Member Spotlight" article about Jeff, N8II in the latest issue of QST for September 2018. Don't miss it. He didn't mention much about county hunting in it though! Nothing at all. Hi hi.

Also good article on magnetic loop antennas – and much more in the QEX this quarter on magnetic loop antennas.

Awards Issued

USA-PA-K #43	Bob N8KIE	8/6/18.
MASTER GOLD #70	Don, K3IMC	8/16/18.
BINGO III #41	Karl, K4YT	6/3/2018.

- - - - -

N4UP, Peter , WAS AWARDED #196 FOR 125 LAST COUNTIES

NF0N, Mike, WAS AWARDED #68 FOR 325 LAST COUNTIES
K3IMC, Don, WAS AWARDED # 32 FOR 575 LAST COUNTIES
AB7RW, Phil, WAS AWARDED #83 FOR 275 LAST COUNTIES
W7FEN, Larry, WAS AWARDED #24 FOR 700 LAST COUNTIES
NA8W, Darl, WAS AWARDED #284 FOR 75 LAST COUNTIES
K8ZZ, Ed, WAS AWARDED #25 FOR 675 LAST COUNTIES

UPCOMING EVENTS

1 1300Z TO 2 0400Z
Colorado QSO Party CW Ph Dig
Name, county or SPC
ppraa.org/coq

2 1800Z TO 3 0300Z
Tennessee QSO Party
CW Ph Dig RS(T), county or SPC
tnqp.org/rules

1 1500Z TO 2 0300Z
Alabama QSO Party
CW Ph RS(T), county or SPC
www.alabamagsoparty.org

8 1400Z TO 8 2200Z

Ohio State Parks on the Air Ph
Park abbreviation or SPC
www.ospota.org

15 1400Z TO 16 0200Z
Iowa QSO Party
CW Ph Dig RS(T), county or SPC
www.w0yl.com/IAQP

15 1600Z TO 16 2200Z
New Hampshire QSO Party CW Dig Ph
RS(T), county or SPC
www.w1wqm.org/nhqso

15 1600Z TO 16 2359Z
Washington State Salmon Run
CW Ph Dig RS(T), county or SPC
www.wwdxc.org/salmonrun

15 1600Z TO 15 2300Z
Wisconsin Parks on the Air Ph
park abbreviation or SPC
www.wipota.com

15 1600z to 16 2000z
New Jersey QSO Party
CW Ph RS(T), county or SPC
www.k2td-bcrc.org/njqp

22 1200z to 23 1200
Maine QSO Party
CW Ph RS(T), county or SPC
www.ws1sm.com

29 1400z to 30 2000z
Texas QSO Party
CW Ph Dig RS(T), county or SPC
www.txqp.net

50th National Convention Registration

October 3 - 6, 2018 Holiday Inn Country Club Plaza, One East 45th St. Kansas City, MO. 64111

NAME: _____ CALL SIGN: _____

ADDRESS: _____

CITY: _____ STATE/PROV: _____ ZIP _____

E-MAIL: _____ PHONE: _____

Convention Registration Fee: Note: Includes badge & Non alcoholic beverages & snacks. \$40.00
(One Registration fee per family – Includes 1 prize ticket)

Name on Badge: _____ Call sign: _____ USACA# _____

Additional Attendees: Badges & non alcoholic beverages & snacks included (list info below)

Total # _____ @ \$10 each = \$ _____

Name _____ Call sign _____ USACA# _____ Relation: _____

Name _____ Call sign _____ USACA# _____ Relation: _____

Relation: S-Spouse, O-Other (specify-friend, son, daughter)

Extra Prize Tickets (Increase your chances of winning the Big Prizes! (plus additional prizes)

Single Tickets _____ x \$1 each = \$ _____

12-pack tickets _____ x \$10.00 = \$ _____

Thurs - October 4, 2018 - Pool Side KS City BBQ 6:00 PM # _____ x \$ 18.00 = \$ _____

Slow smoked pulled pork # _____ or smoked chicken breast # _____ , baked bean, pickle, cole slaw, chocolate mousse, coffee/iced tea

Saturday - October 6, 2018 Banquet 6:00 PM # _____ x \$ 35.00 = \$ _____

Dinner Menu:

Flamed grilled Eye of Ribeye Steak with Gourmet Mushrooms and Demi Glaze # _____

Pan Roasted Chicken with Mushroom Marsala Sauce # _____

Grilled Salmon with Lemon Butter Dill Sauce # _____

Entrees accompanied by fresh field green salad, baked potato, baby green beans and assorted rolls with butter. Choice of cheesecake _____ or carrot cake _____ and freshly brewed coffee, decaffeinated coffee and iced tea.

Gluten free meals available upon request. Must be listed on registration.

TOTAL: \$ _____

Mail your registration form and check payable to **MARAC** to:

Mary Vince - AB7NK
16128 S. Angus Cir
Cordes Lakes, AZ 86333

(Deadline for the Early Registration Prize Drawing has PASSED!)

Door prizes, main prizes, announcements. Please bring a gift value approximately \$15.00 for the gift exchange.

"50" NATIONAL CONVENTION - DOWN TO THE WIRE!

We are down to the final month before many of us will be heading towards the "50" Annual County Hunting Convention held in Kansas City, MO. With your help, we can still reach our goal of 100 attendees. If you haven't registered yet, please do so A.S.A.P.

Make sure your reservation payment is mailed to AB7NK prior to Saturday, September 15th.

Online and mailed reservations will be accepted until October 1st. If you do NOT hear back from AB7NK within 5 days of mailing your reservation, send her an email and don't forget to bring your reservation payments with you to the convention and give them to Mary. The registration form is attached to this newsletter.

See you next month -
Ed, K8ZZ - Chairman